

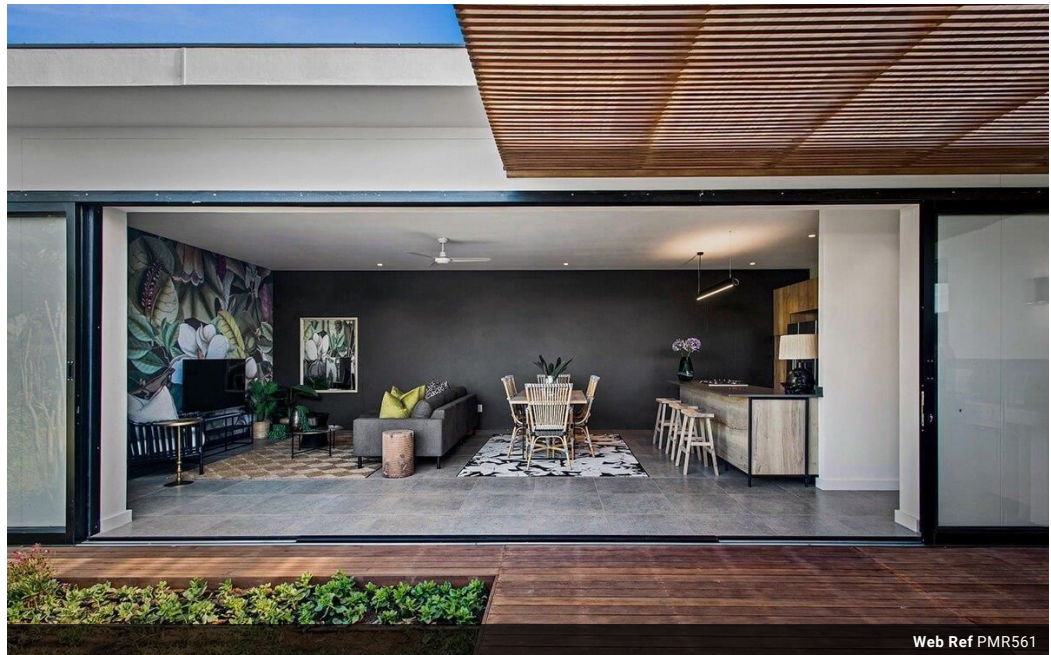


Una van Jaarsveldt
 Non-Principal Property Practitioner
 Registered with PPRA (FFC 115 789 4)
 0832824495
 una.van@kwsa.co.za

Contact Dolphin Coast

032 9461226

Douglas Crowe Drive, Ballito, 4420 - 14 Silverstone Way



Web Ref PMR561



R3,766,000



Monthly Bond Repayment R38,872.21

Calculated over 20 years at 11% with no deposit.

Transfer Costs R253,142.00 **Bond Costs** R49,725.00

These calculations are only a guide. Please ask your conveyancer for exact calculations.

Monthly Levy R2,885 **Monthly Rates** R1,950

Indulge in the Extraordinary Lifestyle of Elaleni Coastal Forest Estate.

Discover the unparalleled allure of Elaleni Gardens at Elaleni Coastal Forest Estate-an exclusive gateway to an extraordinary lifestyle. Nestled within the captivating embrace of Elaleni Coastal Forest, these remarkable two- and three-bedroom homes grant you unrestricted access to a realm of natural wonders. Immerse yourself in elegance as you step into this architecturally designed sectional title development, seamlessly blending secure living with the tranquility of a freestanding house.

Thoughtfully curated to cater to individuals of all ages, Elaleni Gardens presents single-level homes with convenient on-grade entrances. Experience a haven perfectly tailored to those who seek the unmatched lifestyle that Elaleni offers. Unwind amidst your private-use garden and take comfort in knowing that Elaleni warmly welcomes pets,...

Features

Pets Allowed Yes

Interior

Bedrooms	3
Bathrooms	2
Kitchens	1
Recep. Rooms	2
Furnished	No

Exterior

Carports / Parkings	1
Security	Yes
Pool	No
Views	True

Sizes

Floor Size	121m ²
------------	-------------------

Extras

Pet-Friendly Private Garden Central park area Walking paths A clubhouse with splash pool, braai pods, deck and spacious pool deck area

